

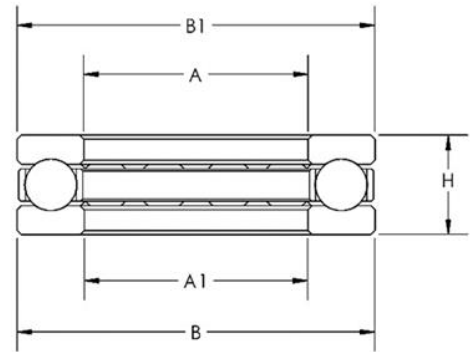
## FM Series: Open Style, Miniature Thrust Bearing with Grooved Raceways

We are proud to announce the addition of the FM thrust bearing series to our trusted line of thrust bearings. This bearing series is a high precision line of miniature thrust ball bearings that can accommodate axial loads in a single direction. These bearings are designed with a deep groove on one side of the race and are suitable for applications with larger speed and load ratings than that of the F miniature thrust bearing series.

- Miniature ball thrust bearing
- Open style
- Grooved raceways

These bearings are available with inner bore sizes as small as 3mm (0.1181 inches) and as large as 10mm (0.3937 inches), and with race ODs ranging from 8mm (0.3150 inches) to 20mm (0.7874 inches).

These bearings are typically manufactured with SAE 52100 chrome steel races but can be manufactured in stainless steel upon request. We also support customization of this bearing line to accommodate any special dimensional requirements.



**Please note:** This bearing series is stocked at our manufacturing facility in Macedon NY.

All of the standard dimension FM series bearings are manufactured in Japan, and any custom dimension versions will be manufactured at our facility in Macedon, NY, USA.

### Dimensions (in mm):

Bearing Number	Bore	Bore Clearance	OD	OD Clearance	Height	Basic Load Rating		No. of Balls	Ball Size	Weight (grams)
	A	A1	B	B1	H	Static Ca(N)	Dynamic Coa(N)			
<b>F3-8M</b>	3	3.2	8	7.8	3.5	993	590	6	1.588	0.9
<b>F4-9M</b>	4	4.2	9	8.8	4.0	944	640	6	1.588	1.2
<b>F4-10M</b>	4	4.2	10	9.8	4.0	925	661	6	1.588	1.5
<b>F5-12M</b>	5	5.2	12	11.8	4.0	1056	942	8	1.588	2.1
<b>F6-12M</b>	6	6.2	12	11.8	4.5	1819	1588	9	2.000	2.2
<b>F6-14M</b>	6	6.3	14	13.8	5.0	2155	1701	7	2.381	3.5
<b>F7-13M</b>	7	7.2	13	12.8	4.5	1767	1645	9	2.000	2.6
<b>F7-17M</b>	7	7.2	17	16.8	6.0	3086	2675	8	2.778	6.5
<b>F8-16M</b>	8	8.2	16	15.8	5.0	3917	3394	9	3.000	4.5
<b>F8-19M</b>	8	8.2	19	18.8	7.0	3939	3476	8	3.175	9.1
<b>F9-20M</b>	9	9.2	20	19.8	7.0	3855	3571	8	3.175	9.9
<b>F10-18M</b>	10	10.2	18	17.8	5.5	2470	2721	10	2.381	5.4