

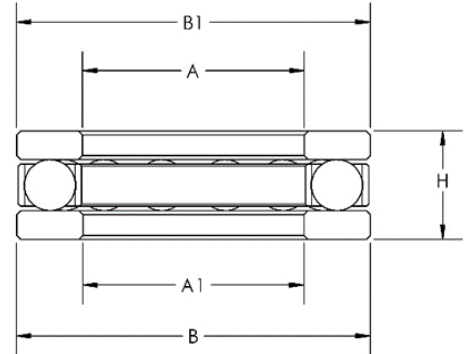
F Series: Open Style, Miniature Thrust Bearing with Flat Raceways

We are proud to announce the addition of the F thrust bearing series to our trusted line of thrust bearings. This bearing series is a high precision line of miniature thrust ball bearings that can accommodate axial loads in a single direction. The bearings in this series are designed with flat raceways and are suitable for applications with smaller load and speed requirements than that of the FM miniature thrust bearing series.

- Miniature ball thrust bearing
- Open style
- Flat raceways

These bearings are available with bore sizes as small as 2mm (0.0787 inches) and as large as 10mm (0.3937 inches), and with the race ODs ranging from 6mm (0.2362 inches) to 18mm (0.7087 inches).

These bearings are typically manufactured with SAE 52100 chrome steel races but can be manufactured in stainless steel upon request. We also support customization of this bearing line to accommodate any special dimensional requirements.



Please note: This bearing series is *not* stocked at our manufacturing facility in Macedon NY.

All of the standard dimension F series bearings are manufactured in Japan, and any custom dimension versions will be manufactured at our facility in Macedon, NY, USA.

Dimensions (in mm):

| Bearing Number | Bore | | OD | | Height H | Basic Load Rating | | No. of Balls | Ball Size | Weight (grams) |
|----------------|------|------|----|----|-------------|-------------------|----------------|--------------|-----------|----------------|
| | A | A1 | B | B1 | | Static Coa(N) | Dynamic Coa(N) | | | |
| F2-6 | 2.0 | 2.0 | 6 | 6 | 3.0 | 117 | 83 | 6 | 1.000 | 0.6 |
| F2X-7 | 2.5 | 2.5 | 7 | 7 | 3.5 | 156 | 117 | 6 | 1.200 | 0.9 |
| F3-8 | 3.0 | 3.0 | 8 | 8 | 3.5 | 166 | 137 | 7 | 1.200 | 0.6 |
| F4-9 | 4.0 | 4.0 | 9 | 9 | 4.0 | 166 | 156 | 8 | 1.200 | 1.5 |
| F4-10 | 4.0 | 4.0 | 10 | 10 | 4.5 | 274 | 245 | 7 | 1.588 | 2.0 |
| F5-11 | 5.0 | 5.0 | 11 | 11 | 4.5 | 284 | 284 | 7 | 1.588 | 2.4 |
| F6-12 | 6.0 | 6.0 | 12 | 12 | 4.5 | 274 | 284 | 9 | 1.588 | 2.5 |
| F7-15 | 7.0 | 7.0 | 15 | 15 | 5.0 | 558 | 548 | 8 | 2.381 | 4.4 |
| F8-16 | 8.0 | 8.0 | 16 | 16 | 5.0 | 597 | 627 | 8 | 2.000 | 5.0 |
| F9-17 | 9.0 | 9.0 | 17 | 17 | 5.0 | 437 | 542 | 9 | 2.000 | 5.1 |
| F10-18 | 10.0 | 10.0 | 18 | 18 | 5.5 | 617 | 705 | 9 | 2.381 | 6.0 |