

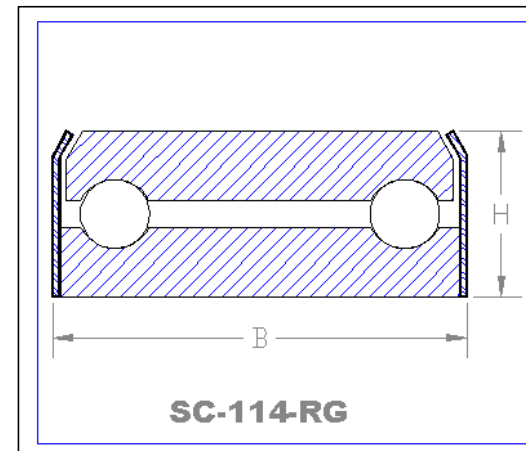
# AUBURN BALL BEARING SC-114RG

## BALL THRUST BEARING TOTALLY ENCLOSED SELF CONTAINED ROUND GROOVES

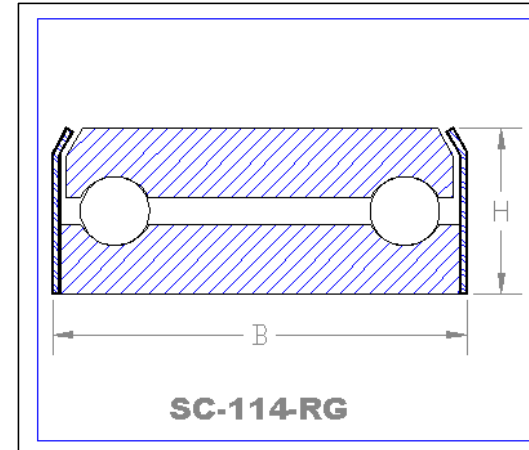
Auburn Enclosed Style SC-114RG Ball Thrust Bearing answers the need for an easily installed bearing requiring a minimum of machine work for its use. The small pitch diameter of the ball grooves for a given shaft diameter, and the large diameter balls used give a relatively low peripheral ball speed. This with the heavy race sections and deep grooves result in a bearing of unusual capacity and life for its size. It is self-contained, totally enclosed unit and is recommended for use in exposed locations where a protection from foreign matter is required.

## MOUNTING INSTRUCTIONS:

Enclosed Style SC-114RG Ball Thrust Bearing is generally installed so that the race with the sleeve attached to it seats against a fixed part of the machine and is stationary.



# AUBURN BALL BEARING SC-114RG

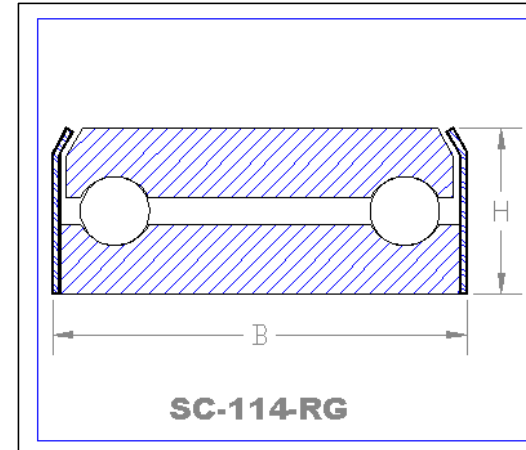


# AUBURN BALL BEARING SC-114RG

DIMENSIONS IN INCHES

THRUST LOAD CAPACITY IN LBS. AT VARIOUS SPEEDS

Bearing Number	B Outside Diameter	B Tolerance +.000	H Height	H Tolerance + or -	Balls No. - Size	Bearing Weight in Lbs.	5 RPM	25 RPM	50 RPM	100 RPM	300 RPM	500 RPM	1000 RPM	1500 RPM
SC-0010	5/8	-.002	7/16	.005	6 - 5/32	.02	840	515	420	340	245	210	170	150
SC-0011	11/16	-.002	1/2	.005	6 - 3/16	.05	1185	730	590	480	345	295	240	210
SC-0012	3/4	-.002	9/16	.005	5 - 7/32	.06	1345	825	670	545	390	335	275	240
SC-0013	13/16	-.002	5/8	.005	5 - 1/4	.08	1735	1070	870	705	505	435	355	310
SC-0014	7/8	-.002	11/16	.005	6 - 1/4	.11	2035	1250	1015	825	590	510	415	365
SC-0015	15/16	-.002	3/4	.005	5 - 9/32	.12	2155	1330	1080	875	630	540	440	385
SC-1000	1	-.003	3/4	.005	6 - 9/32	.14	2540	1565	1270	1030	740	635	515	455
SC-1001	1 1/16	-.003	7/8	.005	5 - 11/32	.19	3115	1920	1560	1265	910	780	635	560
SC-1002	1 1/8	-.003	7/8	.005	5 - 11/32	.25	3115	1920	1560	1265	910	780	635	560
SC-1003	1 3/16	-.003	15/16	.005	5 - 3/8	.26	3660	2255	1830	1485	1065	915	750	660
SC-1007	1 7/16	-.004	1 3/16	.005	6 - 9/32	.46	4990	3075	2495	2025	1455	1250	1015	890
SC-1011	1 11/16	-.004	1 1/4	.005	5 - 9/16	.69	7590	4675	3795	3080	2215	1900	1540	1365
SC-1015	1 15/16	-.005	1 5/16	.005	5 - 5/8	.92	9140	5630	4570	3710	2665	2285	1855	1645
SC-2003	2 3/16	-.006	1 11/16	.005	5 - 3/4	1.66	12540	7725	6270	5090	3655	3135	2545	2255



# AUBURN BALL BEARING SC-114RG

DIMENSIONS IN INCHES

THRUST LOAD CAPACITY IN LBS. AT VARIOUS SPEEDS

Bearing Number	B Outside Diameter	B Tolerance +.000	H Height	H Tolerance + or -	Balls No. - Size	Bearing Weight in Lbs.	5 RPM	25 RPM	50 RPM	100 RPM	300 RPM	500 RPM	1000 RPM	1500 RPM
SC-2007	2 7/16	-.006	1 7/8	.005	5 - 13/16	2.24	14380	8855	7190	5835	4190	3595	2920	2580
SC-2012	2 3/4	-.007	2 1/4	.005	6 - 27/32	3.26	18050	11120	9025	7325	5260	4510	3665	3245
SC-2015	2 15/16	-.008	2 1/2	.005	5 - 1	3.65	20400	12570	10200	8280	5950	5100	4140	3665
SC-3003	3 3/16	-.008	2 5/8	.005	5 - 1 1/16	5.46	22520	13875	11260	9140	6565	5630	4570	4045
SC-3007	3 7/16	-.009	2 13/16	.005	6 - 1 1/16	6.25	26540	16350	13270	10770	7735	6635	5385	4770
SC-3015	3 15/16	-.010	2 3/4	.005	6 - 1 1/4	8.41	34570	21295	17235	14030	10080	8645	7015	6210