

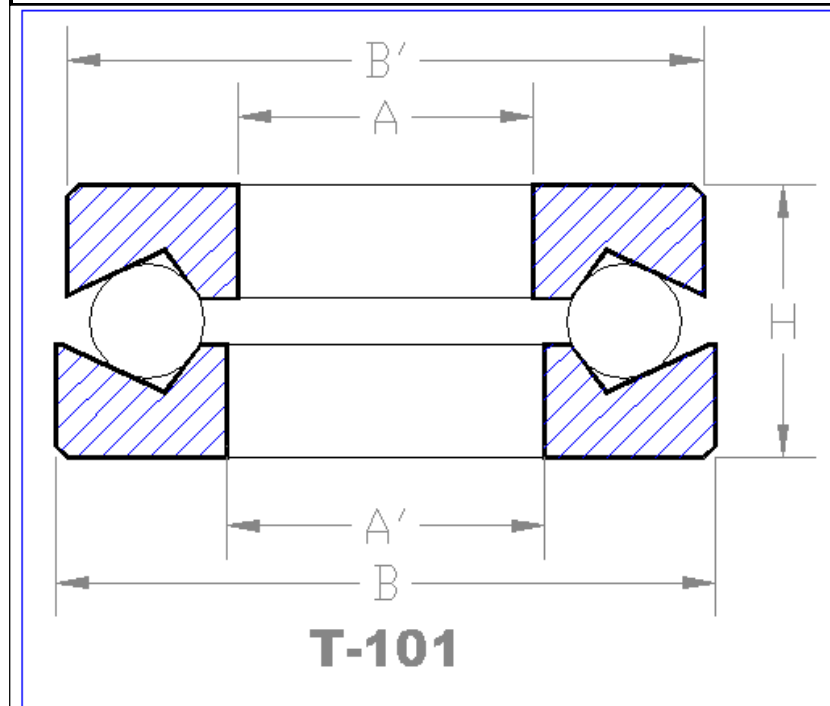
# Auburn Bearing & Manufacturing T-101

## BALL THRUST BEARING OPEN STYLE MAXIMUM CAPACITY, MINIMUM SPACE "AUBURN" GROOVES

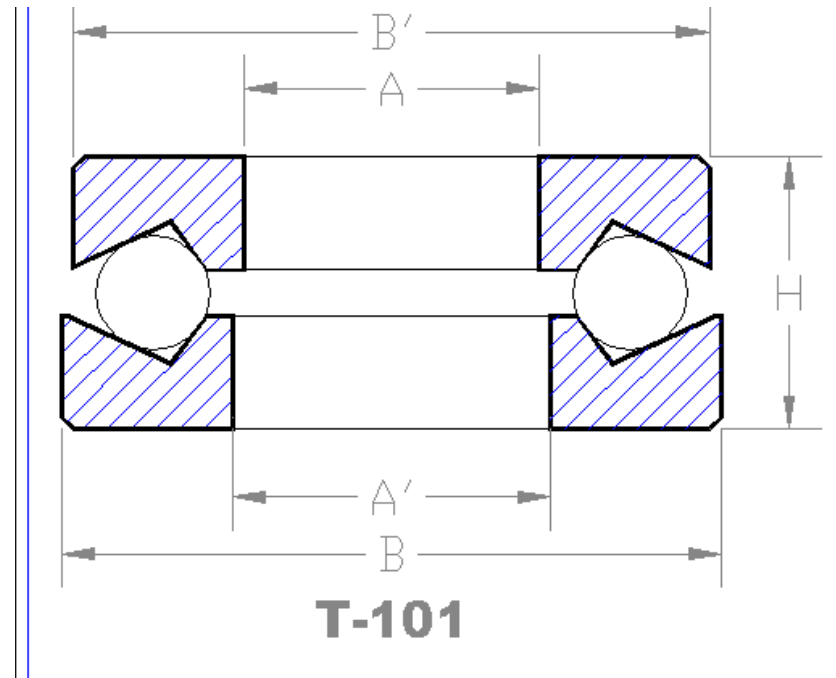
Auburn Open Style T-101 Ball Thrust Bearing is a maximum capacity bearing and is designed to make the best possible use of the limited amount of bearing space that may be available. When preloaded and installed so as to be held by the outside diameter "B" this bearing will carry a radial load equal to 25% of its thrust capacity.

## MOUNTING INSTRUCTIONS:

Open Style T-101 Ball Thrust Bearing is generally installed so that the race having bore "A" is centered by the shaft and rotates with it. The race having clearance bore "A'" seats against a fixed part of the machine and is stationary. If installed in a recess, a clearance of one-eighth inch or more should be left around the outside diameter "B" and "B'" so that the shaft should wear in its journal bearings, the thrust bearing will be free to follow without cramping or wedging the balls. When used to carry a combination radial and thrust load. The housing is made a snug fit on diameter "B."

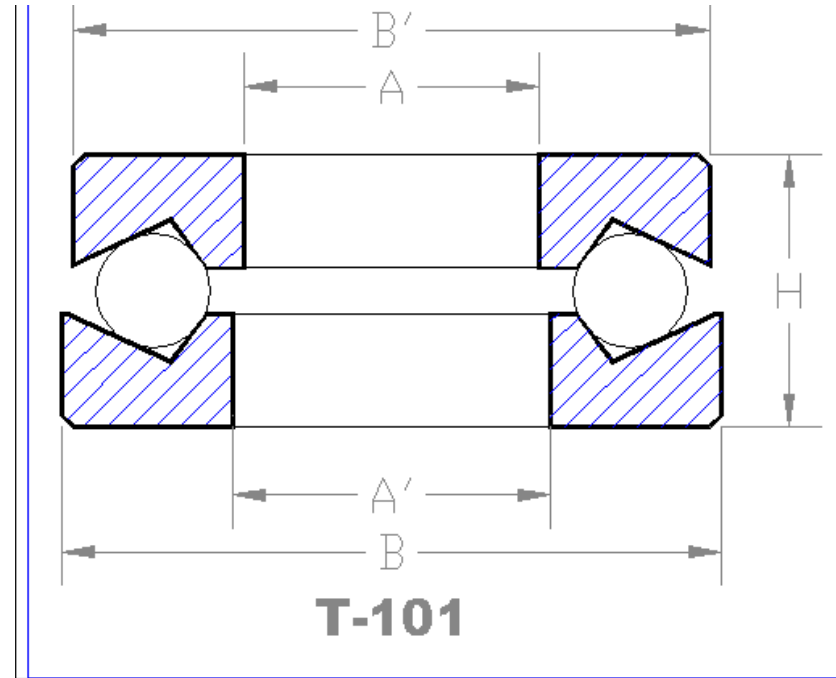


# Auburn Bearing & Manufacturing T-101



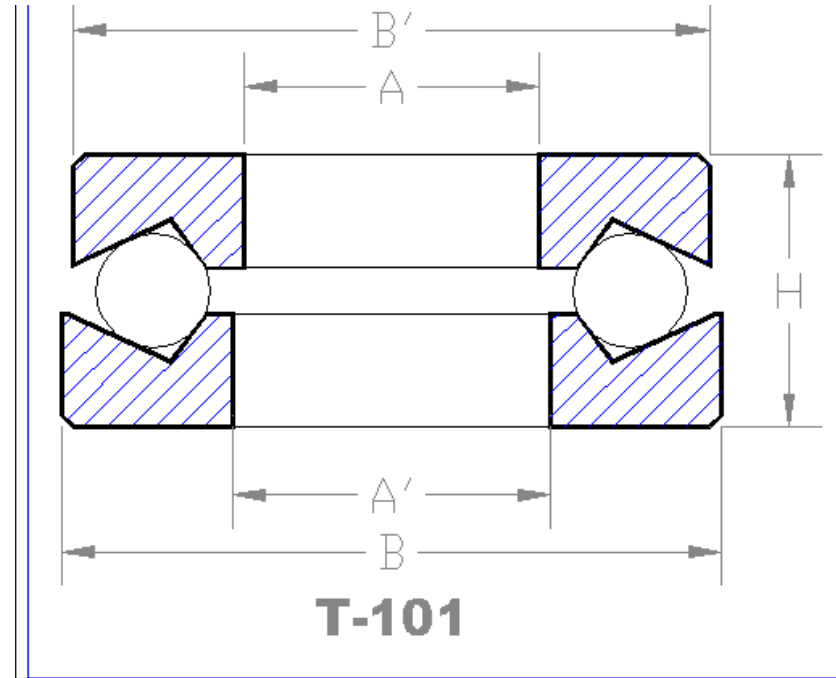
# Auburn Bearing & Manufacturing T-101

Bearing Number	*A' tolerance +.015			DIMENSIONS IN INCHES				*Height tolerance + or - .005						THRUST LOAD CAPACITY IN LBS. AT VARIOUS SPEEDS			
	A Bore	A Tolerance	*A' Bore	B Outside Diameter	B Tolerance	B' Outside Diameter	B' Tolerance	*H Height	Bearing Weight in Lbs.	25 RPM	100 RPM	500 RPM	1500 RPM				
				LIGHT	TYPE		+ .000										
1	1/2	+.001 +.003	17/32	1 1/8	+.001 -.001	1 7/64	-.015	5/8	.11	1930	1275	785	565				
2	5/8	+.001 +.003	21/32	1 5/16	+.001 -.001	1 19/64	-.015	5/8	.16	2225	1465	905	645				
3	3/4	+.001 +.003	25/32	1 7/16	+.002 -.002	1 27/64	-.015	11/16	.19	2480	1635	1005	725				
4	7/8	+.001 +.003	29/32	1 1/2	+.002 -.002	1 31/64	-.015	11/16	.19	2480	1635	1005	725				
5	7/8	+.001 +.003	29/32	1 3/4	+.002 -.002	1 47/64	-.015	11/16	.20	3570	2350	1450	1040				
6	15/16	+.001 +.003	31/32	1 15/16	+.003 -.003	1 59/64	-.015	13/16	.31	4700	3095	1905	1370				
7	1	+.001 +.003	1 1/32	1 15/16	+.003 -.003	1 59/64	-.015	13/16	.39	4700	3095	1905	1370				
8	1 1/16	+.001 +.003	1 3/32	1 15/16	+.003 -.003	1 59/64	-.015	3/4	.36	3940	2595	1600	1150				



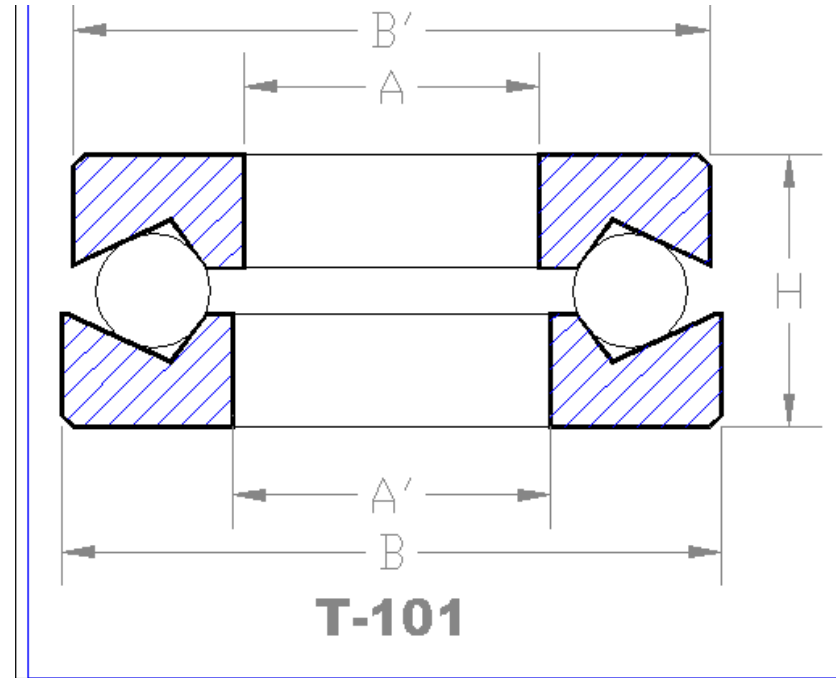
# Auburn Bearing & Manufacturing T-101

Bearing Number	*A' tolerance +.015			DIMENSIONS IN INCHES				*Height tolerance ± or - .005						THRUST LOAD CAPACITY IN LBS. AT VARIOUS SPEEDS			
	A Bore	A Tolerance	*A' Bore	B Outside Diameter	B Tolerance	B' Outside Diameter	B' Tolerance	*H Height	Bearing Weight	25 RPM	100 RPM	500 RPM	1500 RPM				
9	1 1/16	+.001 +.003	1 3/32	2 1/8	-.003 -.001	2 3/32	-.015	3/4	.44	4100	2700	1665	1195				
10	1 1/8	+.001 +.003	1 5/32	2 1/8	-.003 -.001	2 3/32	-.015	13/16	.45	4985	3285	2025	1455				
11	1 1/4	+.001 +.003	1 9/32	2 11/32	-.003 -.001	2 5/16	-.015	15/16	.63	5505	3625	2235	1605				
13	1 7/16	+.001 +.003	1 15/32	2 7/16	-.003 -.001	2 13/32	-.015	15/16	.67	5730	3775	2325	1670				
15	1 1/2	+.001 +.003	1 17/32	2 17/32	-.003 -.001	2 1/2	-.015	15/16	.69	5945	3915	2410	1735				
16	1 11/16	+.001 +.003	1 23/32	2 11/16	-.003 -.001	2 21/32	-.015	13/16	1.70	6140	4045	2490	1790				
19	1 13/16	+.001 +.003	1 27/32	2 15/16	-.003 -.001	2 29/32	-.015	15/16	.98	6315	4160	2565	1840				
21	1 11/16	+.001 +.003	1 23/32	3 1/8	-.003 -.001	3 3/32	-.015	1 1/8	1.41	9255	6095	3755	2825				
22	1 13/16	+.001 +.003	1 27/32	3 1/8	-.003 -.001	3 3/32	-.015	1 1/8	1.31	9255	6095	3755	2825				



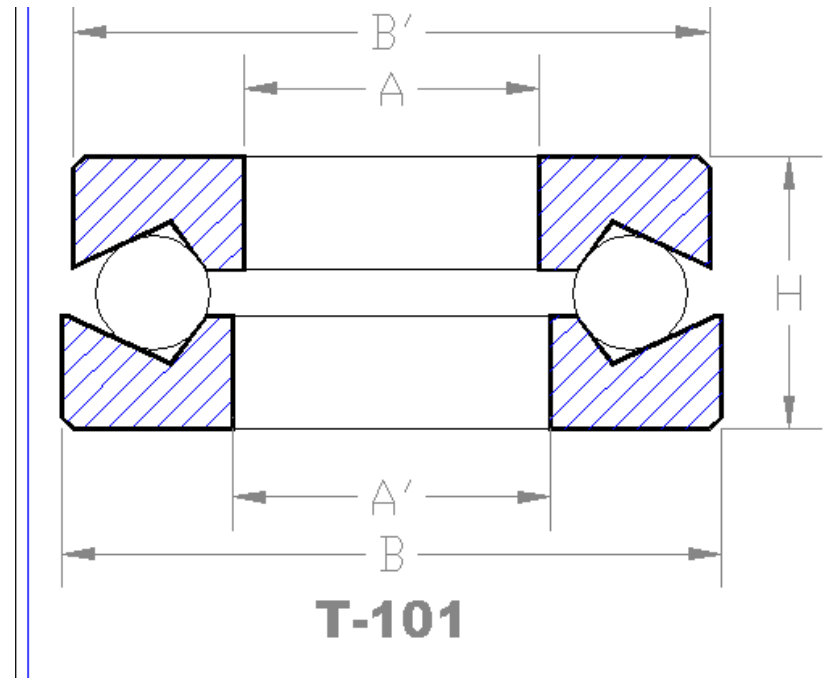
# Auburn Bearing & Manufacturing T-101

Bearing Number	*A' tolerance +.015			DIMENSIONS IN INCHES				*Height tolerance + or - .005 THRUST LOAD CAPACITY IN LBS. AT VARIOUS SPEEDS					
	A Bore	A Tolerance	*A' Bore	B Outside Diameter	B Tolerance	B' Outside Diameter	B' Tolerance	*H Height	Bearing Weight	25 RPM	100 RPM	500 RPM	1500 RPM
23	1 7/8	+.001 +.003	1 29/32	3 1/8	-.003 -.001	3 3/32	-.015	1 3/16	1.38	9255	6095	3755	2825
24	1 15/16	+.001 +.003	1 31/32	2 15/16	-.003 -.001	2 29/32	-.015	1	.91	6485	4270	2630	1890
25	1 15/16	+.001 +.003	1 31/32	3 3/16	-.003 -.001	3 5/32	-.015	1 3/16	1.31	9255	6095	3755	2825
26	2	+.001 +.003	2	3 3/16	-.003 -.001	3 5/32	-.015	1 3/16	1.25	8130	5355	3300	2370
27	2 1/16	+.001 +.003	2 3/32	3 3/16	-.003 -.001	3 5/32	-.015	1 1/8	1.34	8130	5355	3300	2370
28	2 3/16	+.001 +.003	2 7/32	3 1/4	-.003 -.001	3 7/32	-.015	1	1.06	6755	4450	2740	1970
30	1 15/16	+.001 +.003	1 31/32	3 7/16	-.003 -.001	3 13/32	-.015	1 1/4	1.41	9640	6350	3910	2810
31	2 7/16	+.001 +.003	2 15/32	3 1/2	-.003 -.001	3 15/32	-.015	1 1/8	1.31	8775	5780	3560	2560
32	2 1/2	+.001 +.003	2 17/32	3 1/2	-.003 -.001	3 15/32	-.015	1 1/4	1.38	8775	5780	3560	2560



# Auburn Bearing & Manufacturing T-101

Bearing Number	*A' tolerance +.015			DIMENSIONS IN INCHES				*Height tolerance + or - .005 THRUST LOAD CAPACITY IN LBS. AT VARIOUS SPEEDS						
	A Bore	A Tolerance	*A' Bore	B Outside Diameter	B Tolerance	B' Outside Diameter	B' Tolerance	*H Height	Bearing Weight	25 RPM	100 RPM	500 RPM	1500 RPM	
33	2 5/16	+.001 +.003	2 11/32	3 5/8	-.003 -.001	3 19/32	-.015	1 1/4	1.47	10635	7005	4315	3100	
34	2 1/8	+.001 +.003	2 5/32	3 23/32	-.003 -.001	3 11/16	-.015	13/16	1.03	5130	3380	2080	1495	
38	2 13/16	+.001 +.003	2 27/32	4 1/2	-.003 -.001	4 15/32	-.015	1 1/2	3.13	15325	10095	6220	4470	
40	3 3/16	+.002 +.004	3 7/32	5 3/8	-.003 -.001	5 5/16	-.015	1 1/2	4.50	18630	12270	7560	---	
41	3 7/16	+.002 +.004	3 15/32	5 1/2	-.003 -.001	5 7/16	-.015	1 1/2	4.25	19085	12570	7745	---	
42	4 1/8	+.003 +.007	4 3/16	5 7/8	-.003 -.001	5 13/16	-.015	1 1/2	4.75	17575	11575	7130	---	
44	5 1/8	+.003 +.007	5 3/16	7	-.004 -.001	6 29/32	-.031	1 1/2	6.25	17900	11790	7265	---	
				HEAVY TYPE										
48	1 1/16	+.001 +.003	1 3/32	2 7/16	-.003 -.001	2 13/32	-.015	1	.88	6225	4100	2525	1900	



# Auburn Bearing & Manufacturing T-101

Bearing Number	*A' tolerance +.015			DIMENSIONS IN INCHES				*Height tolerance + or - .005 THRUST LOAD CAPACITY IN LBS. AT VARIOUS SPEEDS					
	A Bore	A Tolerance	*A' Bore	B Outside Diameter	B Tolerance	B' Outside Diameter	B' Tolerance	*H Height	Bearing Weight	25 RPM	100 RPM	500 RPM	1500 RPM
49	1 5/16	+.001 +.003	1 11/32	2 11/16	-.003 -.001	2 21/32	-.015	1 1/8	1.03	7910	5210	3210	2305
50	1 9/16	+.001 +.003	1 19/32	2 15/16	-.003 -.001	2 29/32	-.015	1 3/16	1.31	8830	5815	3580	2575
51	1 13/16	+.001 +.003	1 27/32	3 3/16	-.003 -.001	3 5/32	-.015	1 1/8	1.44	9255	6095	3755	2825
52	2 1/8	+.001 +.003	2 5/32	3 3/4	-.003 -.001	3 23/32	-.015	1 1/4	2.19	10635	7005	4315	3100
53	2 7/16	+.001 +.003	2 15/32	3 15/16	-.003 -.001	3 29/32	-.015	1 1/2	2.59	14285	9410	5795	4165
57	3 7/16	+.002 +.004	3 15/32	5 1/2	-.003 -.001	5 7/16	-.015	1 3/4	5.75	21005	13835	8525	---
62	4 11/16	+.003 +.007	4 3/4	7 1/4	-.004 -.001	7 5/32	-.031	2 3/8	13.75	35170	23165	14270	---
63	4 15/16	+.003 +.007	5	7 1/2	-.004 -.001	7 13/32	-.031	2 3/8	13.75	35170	23165	14270	---
67	5 15/16	+.003 +.007	6	9 1/4	-.005 -.001	9 1/8	-.031	3	26.00	50420	33210	20460	---