

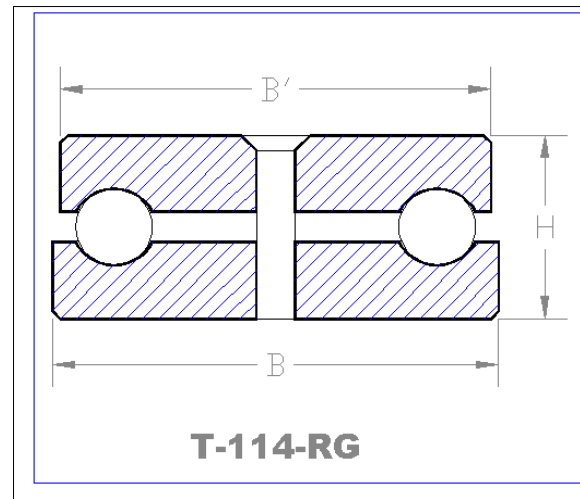
Auburn Bearing & Manufacturing T-114RG

BALL THRUST BEARING OPEN STYLE SELF CONTAINED ROUND GROOVES

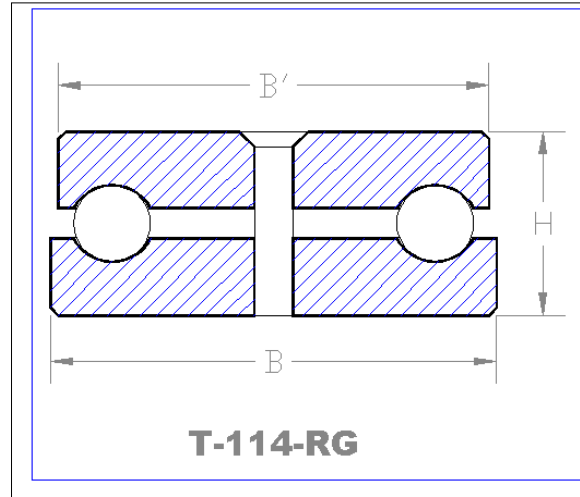
Auburn Open Style T-114RG Ball Thrust Bearing answers the need for an easily installed bearing requiring a minimum of machine work for its use. The small pitch diameter of the ball grooves for a given shaft diameter, and the large diameter balls used give a relatively low peripheral ball speed. This with the heavy washer sections and deep grooves result in a bearing of unusual capacity and life for its size. It is self-contained, the two races and balls being held together as a unit by a center pin.

MOUNTING INSTRUCTIONS:

Open Style T-114RG Ball Thrust Bearing fits at the end of the shaft in the journal bearing or housing. It is made slightly under-size of a standard diameter shaft. Diameter "B" seats against the stationary end of the bearing housing and diameter "B" is placed against the end of the rotating shaft.

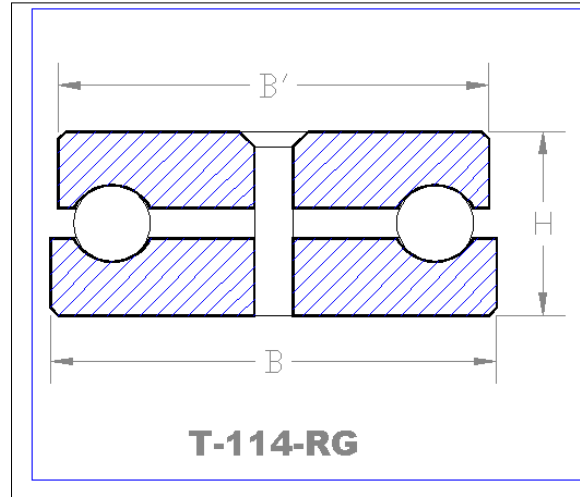


Auburn Bearing & Manufacturing T-114RG



Auburn Bearing & Manufacturing T-114RG

Bearing Number	DIMENSIONS IN INCHES		* Height tolerance + or - .005			Bearing Weight in Lbs.	THRUST LOAD CAPACITY IN LBS. AT VARIOUS SPEEDS							
	B Outside Diameter	B Tolerance +.000	B' Outside Diameter	B' Tolerance +.000	*H Height		5 RPM	25 RPM	50 RPM	100 RPM	300 RPM	500 RPM	1000 RPM	1500 RPM
0004	1/4	-.002	15/64	-.005	3/16	.007	185	115	90	75	55	45	38	30
0005	5/16	-.002	19/64	-.005	7/32	.009	250	150	125	100	70	60	50	45
0006	3/8	-.002	23/64	-.005	1/4	.01	405	250	205	165	120	100	85	75
0007	7/16	-.002	27/64	-.005	9/32	.02	480	295	240	195	140	120	98	85
0008	1/2	-.002	31/64	-.005	5/16	.03	700	430	350	285	205	175	145	125
0009	9/16	-.002	35/64	-.005	3/8	.04	960	590	480	390	280	240	195	175
0010	5/8	-.002	39/64	-.015	7/16	.05	1185	730	590	480	345	295	240	210
0011	11/16	-.002	43/64	-.015	1/2	.06	1345	825	670	545	390	335	275	240
0012	3/4	-.002	47/64	-.015	9/16	.07	1735	1070	870	705	505	435	355	310
0013	13/16	-.002	51/64	-.015	5/8	.08	2155	1330	1080	875	630	540	440	385
0014	7/8	-.002	55/64	-.015	11/16	.10	2155	1330	1080	875	630	540	440	385
0015	15/16	-.002	59/64	-.015	3/4	.12	2625	1615	1310	1065	765	655	535	470
1000	1	-.003	63/64	-.015	3/4	.14	3080	1895	1540	1250	900	770	625	555
1001	1 1/16	-.003	1 3/64	-.015	7/8	.19	3115	1920	1560	1265	910	780	635	560
1002	1 1/8	-.003	1 7/64	-.015	7/8	.25	3670	2260	1835	1490	1070	920	745	660
1003	1 3/16	-.003	1 11/64	-.015	15/16	.26	4310	2655	2155	1750	1255	1080	875	775
1007	1 7/16	-.004	1 27/64	-.015	1 3/16	.46	5715	3515	2850	2315	1660	1425	1160	1025
1011	1 11/16	-.004	1 43/64	-.015	1 1/4	.69	7590	4675	3795	3080	2215	1900	1540	1365



Auburn Bearing & Manufacturing T-114RG

Bearing Number	B Outside Diameter	B Tolerance +.000	B' Outside Diameter	B' Tolerance +.000	*H Height	Bearing Weight in Lbs.	5 RPM	25 RPM	50 RPM	100 RPM	300 RPM	500 RPM	1000 RPM	1500 RPM
1015	1 15/16	-.005	1 59/64	-.015	1 5/16	.92	10755	6625	5380	4365	3135	2690	2185	1930
2003	2 3/16	-.006	2 5/32	-.015	1 11/16	1.66	12540	7725	6270	5090	3655	3135	2545	2255
2007	2 7/16	-.006	2 13/32	-.015	1 7/8	2.24	14380	8855	7190	5835	4190	3595	2920	2580
2012	2 3/4	-.007	2 23/32	-.015	2 1/4	3.26	19195	11825	9600	7790	5595	4800	3895	3450
2015	2 15/16	-.008	2 29/32	-.015	2 1/2	3.65	20400	12570	10200	8280	5950	5100	4140	3665
3003	3 3/16	-.008	3 5/32	-.015	2 5/8	5.46	22520	13875	11260	9140	6565	5630	4570	4045
3007	3 7/16	-.009	3 13/32	-.015	2 13/16	6.25	27455	16910	13725	11140	8005	6860	5570	4930
3015	3 15/16	-.010	3 29/32	-.015	2 3/4	8.41	34570	21295	17235	14030	10080	8645	7015	6210