

T-101 Auburn Open Style T-101 Ball Thrust Bearing



The T-101 Series is designed to offer the best possible use of limited bearing space. The T-101 consists of two hardened steel races with a full complement of balls. When preloaded and installed to be held by the outside diameter B, the "V" grooved raceways enable this series to carry radial loads equal to 25% of its thrust load capacity. This decreases the amount of friction created by a full contact round groove design. The open style design of this bearing will allow maximum circulation of lubricating products.

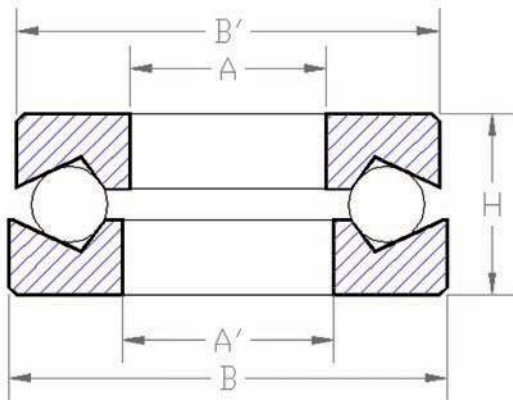
Please note: Part numbers with a grey background indicate items normally stocked in Macedon, NY.

Light Type

DIMENSIONS IN INCHES

THRUST LOAD CAPACITY IN LBS. AT VARIOUS SPEEDS

Bearing Number	A Bore	A Tolerance	A' Bore (A' Tolerance) -.000 + .015	B Outside Diameter	B Tolerance	B' Outside Diameter	B' Tolerance +.000	H Height (Height Tolerance) + or -.005	Balls No. - Size	Bearing Weight in Lbs.	THRUST LOAD CAPACITY IN LBS. AT VARIOUS SPEEDS			
											25 RPM	100 RPM	500 RPM	1500 RPM
1	1/2	+0.001 +0.003	17/32	1-1/8	+0.001 -0.001	1-7/64	-0.015	5/8	10-1/4	.11	1930	1275	785	565
2	5/8	+0.001 +0.003	21/32	1-5/16	+0.001 -0.001	1-19/64	-0.015	5/8	12-1/4	.16	2225	1465	905	645
3	3/4	+0.001 +0.003	25/32	1-7/16	+0.002 -0.002	1-27/64	-0.015	11/16	14-1/4	.19	2480	1635	1005	725
4	7/8	+0.001 +0.003	29/32	1-1/2	+0.002 -0.002	1-31/64	-0.015	11/16	14-1/4	.19	2480	1635	1005	725
5	7/8	+0.001 +0.003	29/32	1-3/4	+0.002 -0.002	1-47/64	-0.015	11/16	13-5/16	.20	3570	2350	1450	1040
6	15/16	+0.001 +0.003	31/32	1-15/16	+0.003 -0.003	1-59/64	-0.015	13/16	12-3/8	.31	4700	3095	1905	1370
7	1	+0.001 +0.003	1-1/32	1-15/16	+0.003 -0.003	1-59/64	-0.015	13/16	12-3/8	.39	4700	3095	1905	1370
8	1-1/16	+0.001 +0.003	1-3/32	1-15/16	+0.003 -0.003	1-59/64	-0.015	3/4	15-5/16	.36	3940	2595	1600	1150
9	1-1/16	+0.001 +0.003	1-3/32	2-1/8	+0.003 -0.003	2-3/32	-0.015	3/4	16-5/16	.44	4100	2700	1665	1195
10	1-1/8	+0.001 +0.003	1-5/32	2-1/8	+0.003 -0.003	2-3/32	-0.015	13/16	13-3/8	.45	4985	3285	2025	1455
11	1-1/4	+0.001 +0.003	1-9/32	2-11/32	+0.003 -0.003	2-5/16	-0.015	15/16	15-3/8	.63	5505	3625	2235	1605
13	1-7/16	+0.001 +0.003	1-15/32	2-7/16	+0.003 -0.003	2-13/32	-0.015	15/16	16-3/8	.67	5730	3775	2325	1670
15	1-1/2	+0.001 +0.003	1-17/32	2-17/32	+0.003 -0.003	2-1/2	-0.015	15/16	17-3/8	.69	5945	3915	2410	1735
16	1-11/16	+0.001 +0.003	1-23/32	2-11/16	+0.003 -0.003	2-21/32	-0.015	13/16	18-3/8	1.70	6140	4045	2490	1790
19	1-13/16	+0.001 +0.003	1-27/32	2-15/16	+0.003 -0.003	2-29/32	-0.015	15/16	19-3/8	.98	6315	4160	2565	1840
21	1-11/16	+0.001 +0.003	1-23/32	3-1/8	+0.003 -0.003	3-3/32	-0.015	1-1/8	15-1/2	1.41	9255	6095	3755	2825
22	1-13/16	+0.001 +0.003	1-27/32	3-1/8	+0.003 -0.003	3-3/32	-0.015	1-1/8	15-1/2	1.31	9255	6095	3755	2825
23	1-7/8	+0.001 +0.003	1-29/32	3-1/8	+0.003 -0.003	3-3/32	-0.015	1-13/16	15-1/2	1.38	9255	6095	3755	2825
24	1-15/16	+0.001 +0.003	1-31/32	2-15/16	+0.003 -0.003	2-29/32	-0.015	1	20-3/8	.91	6485	4270	2630	1890
25	1-15/16	+0.001 +0.003	1-31/32	3-3/16	+0.003 -0.003	3-5/32	-0.015	1-3/16	15-1/2	1.31	9255	6095	3755	2825
26	2	+0.001 +0.003	2-1/32	3-3/16	+0.003 -0.003	3-5/32	-0.015	1-3/16	18-7/16	1.25	8130	5355	3300	2370
27	2-1/16	+0.001 +0.003	2-3/32	3-3/16	+0.003 -0.003	3-5/32	-0.015	1-1/8	18-7/16	1.34	8130	5355	3300	2370
28	2-3/16	+0.001 +0.003	2-7/32	3-1/4	+0.003 -0.003	3-7/32	-0.015	1	22-3/8	1.06	6755	4450	2740	1970



T-101 Mounting Instructions

The T-101 Series is generally installed with the fitted bore A centered on the shaft and rotating with it. The clearance bore A' seats against a fixed part of the machine and remains stationary. If installed in a recess, a clearance of one eighth of an inch, or more, should be left around outside diameter B and B', in case the shaft wears in it's journal bearings. If this should happen the clearance allowed on the outside diameter will prevent the balls from wedging. When used to carry a combination radial and thrust load, diameter B requires a snug fit in the housing.

Bearing Number	DIMENSIONS IN INCHES										THRUST LOAD CAPACITY IN LBS. AT VARIOUS SPEEDS			
	A Bore	A Tolerance	A' Bore (A' Tolerance) -.000 +.015	B Outside Diameter	B Tolerance	B' Outside Diameter	B' Tolerance +.000	H Height (Height Tolerance) + or - .005	Balls No. - Size	Bearing Weight in Lbs.	25 RPM	100 RPM	500 RPM	1500 RPM
30	1- ¹⁵ / ₁₆	+.001 +.003	1- ³¹ / ₃₂	3- ⁷ / ₁₆	+.003 -.003	3- ¹³ / ₃₂	-.015	1- ¹ / ₄	16- ¹ / ₂	1.41	9640	6350	3910	2810
31	2- ⁷ / ₁₆	+.001 +.003	2- ¹⁵ / ₃₂	3- ¹ / ₂	+.003 -.003	3- ¹⁵ / ₃₂	-.015	1- ¹ / ₈	21- ⁷ / ₁₆	1.31	8775	5780	3560	2560
32	2- ¹ / ₂	+.001 +.003	2- ¹⁷ / ₃₂	3- ¹ / ₂	+.003 -.003	3- ¹⁵ / ₃₂	-.015	1- ¹ / ₄	21- ⁷ / ₁₆	1.38	8775	5780	3560	2560
33	2- ⁵ / ₁₆	+.001 +.003	2- ¹¹ / ₃₂	3- ⁵ / ₈	+.003 -.003	3- ¹⁹ / ₃₂	-.015	1- ¹ / ₄	19- ¹ / ₂	1.47	10635	7005	4315	3100
34	2- ¹ / ₈	+.001 +.003	2- ⁵ / ₃₂	3- ²³ / ₃₂	+.003 -.003	3- ¹¹ / ₁₆	-.015	¹³ / ₁₆	29- ⁵ / ₁₆	1.03	5130	3380	2080	1495
38	2- ¹³ / ₁₆	+.001 +.003	2- ²⁷ / ₃₂	4- ¹ / ₂	+.003 -.003	4- ¹⁵ / ₃₂	-.015	1- ¹ / ₂	18- ⁵ / ₈	3.13	15325	10095	6220	4470
40	3- ³ / ₁₆	+.002 +.004	3- ⁷ / ₃₂	5- ³ / ₈	+.003 -.003	5- ⁵ / ₁₆	-.015	1- ¹ / ₂	19- ¹¹ / ₁₆	4.50	18630	12270	7560	---
41	3- ⁷ / ₁₆	+.002 +.004	3- ¹⁵ / ₃₂	5- ¹ / ₂	+.003 -.003	5- ⁷ / ₁₆	-.015	1- ¹ / ₂	20- ¹¹ / ₁₆	4.25	19085	12570	7745	---
42	4- ¹ / ₈	+.003 +.007	4- ³ / ₁₆	5- ⁷ / ₈	+.003 -.003	5- ¹³ / ₁₆	-.015	1- ¹ / ₂	25- ⁵ / ₈	4.75	17575	11575	7130	---
44	5- ¹ / ₈	+.003 +.007	5- ³ / ₁₆	7	+.004 -.004	6- ²⁹ / ₃₂	-.031	1- ¹ / ₂	30- ⁵ / ₈	6.25	17900	11790	7265	---
Heavy Type														
48	1- ¹ / ₁₆	+.001 +.003	1- ³ / ₃₂	2- ⁷ / ₁₆	+.003 -.003	2- ¹³ / ₃₂	-.015	1	12- ⁷ / ₁₆	.88	6225	4100	2525	1900
49	1- ⁵ / ₁₆	+.001 +.003	1- ¹¹ / ₃₂	2- ¹¹ / ₁₆	+.003 -.003	2- ²¹ / ₃₂	-.015	1- ¹ / ₈	12- ¹ / ₂	1.03	7910	5210	3210	2305
50	1- ⁹ / ₁₆	+.001 +.003	1- ¹⁹ / ₃₂	2- ¹⁵ / ₁₆	+.003 -.003	2- ²⁹ / ₃₂	-.015	1- ³ / ₁₆	14- ¹ / ₂	1.31	8830	5815	3580	2575
51	1- ¹³ / ₁₆	+.001 +.003	1- ²⁷ / ₃₂	3- ³ / ₁₆	+.003 -.003	3- ⁵ / ₃₂	-.015	1- ¹ / ₈	15- ¹ / ₂	1.44	9255	6095	3755	2825
52	2- ¹ / ₈	+.001 +.003	2- ⁵ / ₃₂	3- ³ / ₄	+.003 -.003	3- ²³ / ₃₂	-.015	1- ¹ / ₄	19- ¹ / ₂	2.19	10635	7005	4315	3100
53	2- ⁷ / ₁₆	+.001 +.003	2- ¹⁵ / ₃₂	3- ¹⁵ / ₁₆	+.003 -.003	3- ²⁹ / ₃₂	-.015	1- ¹ / ₂	16- ⁵ / ₈	2.59	14285	9410	5795	4165
57	3- ⁷ / ₁₆	+.002 +.004	3- ¹⁵ / ₃₂	5- ¹ / ₂	+.003 -.003	5- ⁷ / ₁₆	-.015	1- ³ / ₄	18- ³ / ₄	5.75	21005	13835	8525	---
62	4- ¹¹ / ₁₆	+.003 +.007	4- ³ / ₄	7- ¹ / ₄	+.004 -.004	7- ⁵ / ₃₂	-.031	2- ³ / ₈	19-1	13.75	35170	23165	14270	---
63	4- ¹⁵ / ₁₆	+.003 +.007	5	7- ¹ / ₂	+.004 -.004	7- ¹³ / ₃₂	-.031	2- ³ / ₈	19-1	13.75	35170	23165	14270	---
67	5- ¹⁵ / ₁₆	+.003 +.007	6	9- ¹ / ₄	+.005 -.005	9- ¹ / ₈	-.031	3	19-1 ¹ / ₄	26.00	50420	33210	20460	---