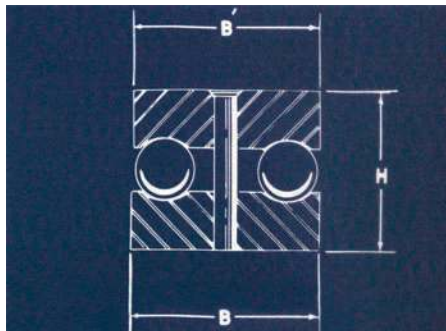


Auburn Open Style T-114-RG Ball Thrust Bearing with Center Rivet

T-114-RG



The T-114-RG Series is recommended for use in locations that require a relatively small bearing to provide unusual capacity and life for its size. The balls are retained between two thick hardened steel races with deep round grooves and are held together by a center rivet. The one piece design of the T-114-RG series offers easy installation; the open style allows maximum circulation of lubricating products.

The T-114-RG answers the need for an easily installed bearing requiring a minimum amount of machine work. The small pitch diameter of the ball grooves and the large diameter balls, give a relatively low peripheral ball speed. The heavy washer sections and deep grooves result in a bearing of unusual capacity and life for its size. The two races and balls are held together as a unit by the center pin.

T-114-RG Mounting Instructions

The T-114-RG Ball Series fits at the end of the shaft in the journal bearing or housing. The bearing dimensions are designed to be slightly less than the usual diameters of standard shafts. This design provides full contact and still allows for bearing clearance. Diameter B seats against the stationary end of the bearing housing, and diameter B' is placed against the end of the rotating shaft.

Please note:

Part numbers with a grey background indicate items normally stocked in Macedon, NY.

DIMENSIONS IN INCHES

THRUST LOAD CAPACITY IN POUNDS AT VARIOUS SPEEDS

Bearing Number	B Outside Diameter	B Tolerance +.000	B' Outside Diameter	B' Tolerance +.000	H Height (Height Tolerance) + or - .005	Balls No. - Size	Bearing Weight in Lbs.	THRUST LOAD CAPACITY IN POUNDS AT VARIOUS SPEEDS							
								5 RPM	25 RPM	50 RPM	100 RPM	300 RPM	500 RPM	1000 RPM	1500 RPM
0004	1/4	-.002	15/64	-.005	3/16	8-1/16	.007	185	115	90	75	55	45	38	30
0005	5/16	-.002	19/64	-.005	7/32	7-5/64	.009	250	150	125	100	70	60	50	45
0006	3/8	-.002	23/64	-.005	1/4	8-3/32	.01	405	250	205	165	120	100	85	75
0007	7/16	-.002	27/64	-.005	9/32	7-7/64	.02	480	295	240	195	140	120	98	85
0008	1/2	-.002	31/64	-.005	5/16	8-1/8	.03	700	430	350	285	205	175	145	125
0009	9/16	-.002	35/64	-.005	3/8	7-5/32	.04	960	590	480	390	280	240	195	175
0010	5/8	-.002	39/64	-.015	7/16	6-3/16	.05	1185	730	590	480	345	295	240	210
0011	11/16	-.002	43/64	-.015	1/2	5-7/32	.06	1345	825	670	545	390	335	275	240
0012	3/4	-.002	47/64	-.015	9/16	5-1/4	.07	1735	1070	870	705	505	435	355	310
0013	13/16	-.002	51/64	-.015	5/8	5-9/32	.08	2155	1330	1080	875	630	540	440	385
0014	7/8	-.002	55/64	-.015	11/16	5-9/32	.10	2155	1330	1080	875	630	540	440	385
0015	15/16	-.002	59/64	-.015	3/4	5-5/16	.12	2625	1615	1310	1065	765	655	535	470
1000	1	-.003	63/64	-.015	3/4	6-5/16	.14	3080	1895	1540	1250	900	770	625	555
1001	1-1/16	-.003	1-3/64	-.015	7/8	5-11/32	.19	3115	1920	1560	1265	910	780	635	560
1002	1-1/8	-.003	1-7/64	-.015	7/8	6-11/32	.25	3670	2260	1835	1490	1070	920	745	660
1003	1-3/16	-.003	1-11/64	-.015	1-15/16	6-3/8	.26	4310	2655	2155	1750	1255	1080	875	775
1007	1-7/16	-.004	1-27/64	-.015	1-3/16	6-7/16	.46	5715	3515	2850	2315	1660	1425	1160	1025
1011	1-11/16	-.004	1-43/64	-.015	1-1/4	5-9/16	.69	7590	4675	3795	3080	2215	1900	1540	1365
1015	1-15/16	-.005	1-59/64	-.015	1-5/16	6-5/8	.92	10755	6625	5380	4365	3135	2690	2185	1930
2003	2-3/16	-.006	2-5/32	-.015	1-11/16	5-3/4	1.66	12540	7725	6270	5090	3655	3135	2545	2255
2007	2-7/16	-.006	2-13/32	-.015	1-7/8	5-13/16	2.24	14380	8855	7190	5835	4190	3595	2920	2580
2012	2-3/4	-.007	2-23/32	-.015	2-1/4	6-7/8	3.26	19195	11825	9600	7790	5595	4800	3895	3450
2015	2-15/16	-.008	2-29/32	-.015	2-1/2	5-1	3.65	20400	12570	10200	8280	5950	5100	4140	3665
3003	3-3/16	-.008	3-5/32	-.015	2-5/8	5-1 1/16	5.46	22520	13875	11260	9140	6565	5630	4570	4045
3007	3-7/16	-.009	3-13/32	-.015	2-13/16	7-1	6.25	27455	16910	13725	11140	8005	6860	5570	4930
3015	3-15/16	-.010	3-29/32	-.015	2-3/4	6-1 1/4	8.41	34570	21295	17235	14030	10080	8645	7015	6210