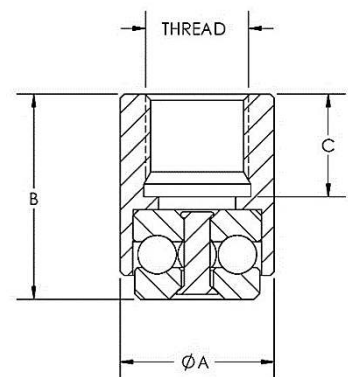
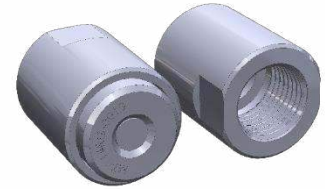


MT-114RG Mounted Thrust Bearing Assembly

The MT-114RG is a bearing assembly that allows Auburn Bearing's popular T-114RG style thrust bearing series to be quickly and easily mounted or bolted into place.

This new design can be installed using a variety of configurations, the most common being bottom thread mounting, shoulder mounting, and lock nut mounting. The flexibility of this bearing and mount assembly makes it a convenient solution for a variety of applications which require the Auburn T-114RG style thrust bearing.

NOTE: All our products are **manufactured in the USA**. We have the capabilities to support any **custom sizes** and/or **special material** needs per the bearing requirements of your specific application. We also offer free, one-on-one **application / engineering support**.



| | A | B | C | Thread | |
|---------------|-------|-------|-------|------------|---------------------------|
| MT-114RG-0006 | 0.500 | 0.625 | 0.312 | 5/16" - 24 | Includes the T-114RG-0006 |
| MT-114RG-0008 | 0.625 | 0.750 | 0.375 | 3/8" - 24 | Includes the T-114RG-0008 |
| MT-114RG-0010 | 0.750 | 1.000 | 0.500 | 1/2" - 20 | Includes the T-114RG-0010 |
| MT-114RG-0011 | 0.812 | 1.062 | 0.500 | 1/2" - 20 | Includes the T-114RG-0011 |
| MT-114RG-0012 | 0.875 | 1.125 | 0.500 | 1/2" - 20 | Includes the T-114RG-0012 |
| MT-114RG-0013 | 0.938 | 1.188 | 0.500 | 1/2" - 20 | Includes the T-114RG-0013 |
| MT-114RG-0014 | 1.062 | 1.562 | 0.750 | 3/4" - 16 | Includes the T-114RG-0014 |
| MT-114RG-0015 | 1.125 | 1.625 | 0.750 | 3/4" - 16 | Includes the T-114RG-0015 |
| MT-114RG-1000 | 1.188 | 1.625 | 0.750 | 3/4" - 16 | Includes the T-114RG-1000 |
| MT-114RG-1002 | 1.312 | 1.750 | 0.750 | 3/4" - 16 | Includes the T-114RG-1002 |
| MT-114RG-1003 | 1.375 | 1.812 | 0.750 | 3/4" - 16 | Includes the T-114RG-1003 |
| MT-114RG-1007 | 1.688 | 2.312 | 1.000 | 1" - 12 | Includes the T-114RG-1007 |
| MT-114RG-1011 | 1.938 | 2.375 | 1.000 | 1" - 12 | Includes the T-114RG-1011 |

Auburn Bearing
& MANUFACTURING